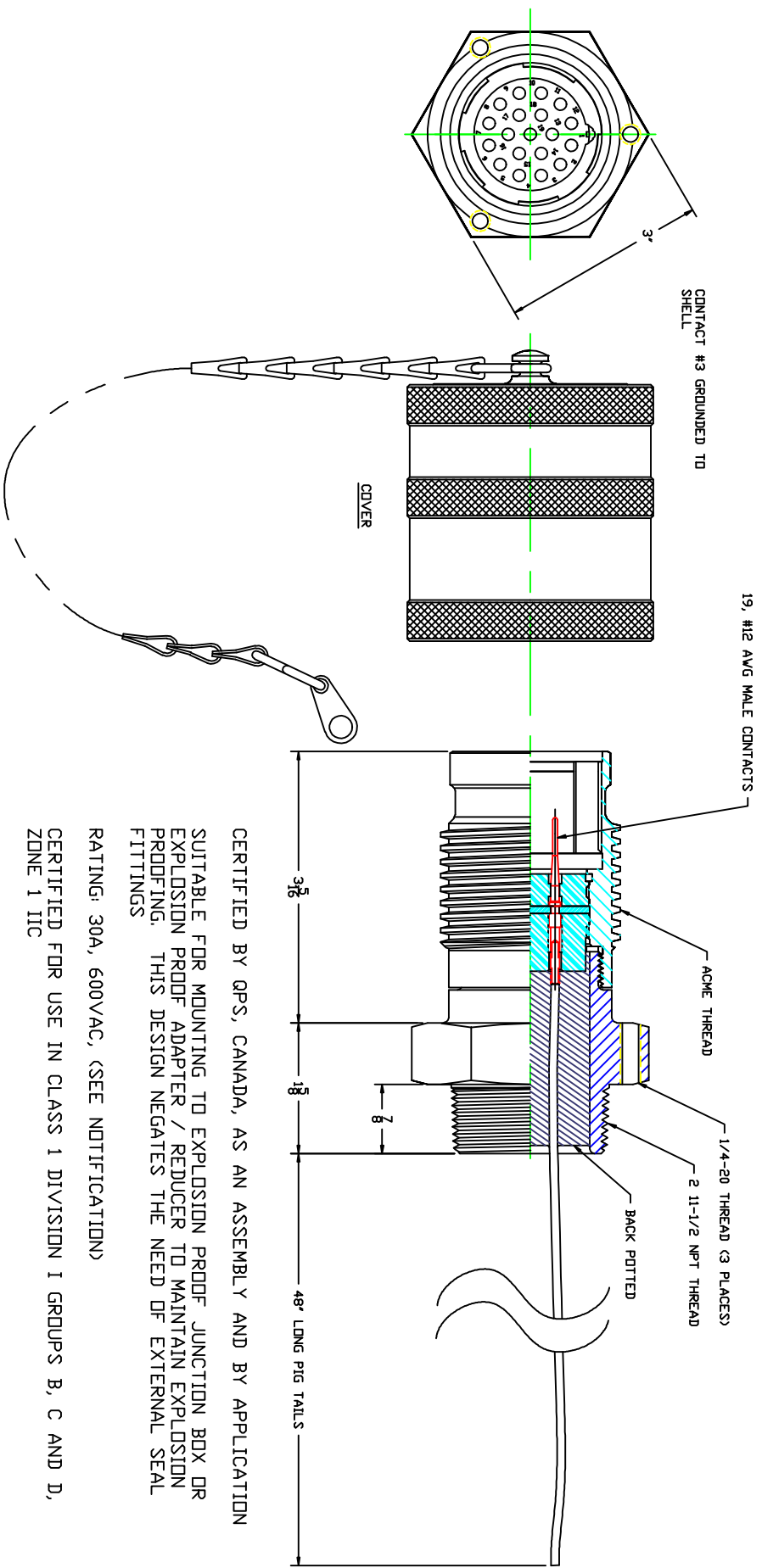


REVISIONS		DATE APPROVED
LR/EAJ	DESCRIPTION	
1716	CLARIFICATION OF NAME PLATE RATING (R27/GRS)	



CERTIFIED BY QPS, CANADA, AS AN ASSEMBLY AND BY APPLICATION  
 SUITABLE FOR MOUNTING TO EXPLOSION PROOF JUNCTION BOX OR  
 EXPLOSION PROOF ADAPTER / REDUCER TO MAINTAIN EXPLOSION  
 PROOFING. THIS DESIGN NEGATES THE NEED OF EXTERNAL SEAL  
 FITTINGS  
 RATING: 30A, 600VAC, (SEE NOTIFICATION)  
 CERTIFIED FOR USE IN CLASS 1 DIVISION I GROUPS B, C AND D,  
 ZONE 1 IIC

SERVICE RATING:  
 30 AMPS 600 VAC PER MIL-C-5015  
 CONNECTOR IS SUITABLE FOR USE AT 30 AMPS ON 3  
 CONTACTS ONLY. ALL OTHER CIRCUITS MUST BE MAX  
 LOAD OF 23 AMPS.  
 NOT SUITABLE FOR CIRCUIT BREAKING APPLICATION

<b>ELBICKICAL EQUIPMENT CORPORATION</b> HIDE SERIES - ATEX, NPT MOUNTED RECEPTACLE, SHELL SIZE 20, 19-#12 AVG. MALE CONTACTS, GROUNDED, 48" PIGTAILS, 600VAC RATING, CLASS 1 DIV 1, GROUP B, C & D, ZONE 1 IIC	
FINISH ±1/64 ± .005 ± 1°	DRAWING NUMBER HIDE-1920-1912MG-L48
DATE 5/23/11	SCALE NONE
SHEET 1 OF 1	DRAWN GRS