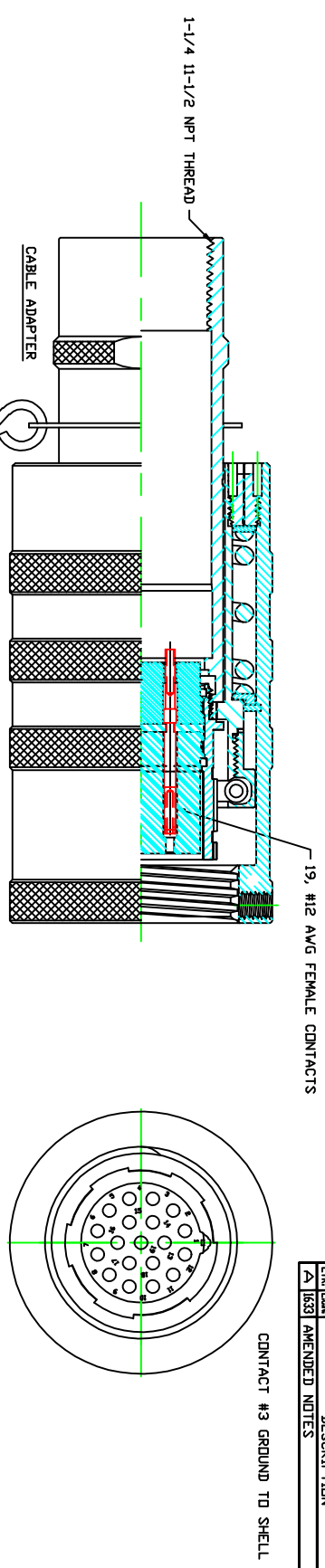
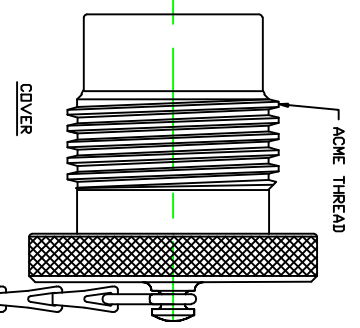
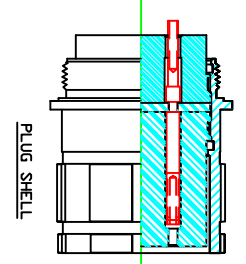


REVISIONS		
LIB. ELEM.	DESCRIPTION	DATE APPROVED
Δ 1633	AMENDED NOTES	10/5/11 GRS



CERTIFIED BY GPS, CANADA, AS AN ASSEMBLY AND BY APPLICATION



CODE LOGIC

EG HDE-1516-606-3716F-LXX

HDE SERIES

CONNECTOR STYLE

10 = IN LINE PLUG ASSEMBLY

15 = IN LINE RECEPTACLE

17 = FLANGE MOUNT RECEPTACLE

19 = NPT, (MALE), MOUNT RECEPTACLE

SHELL SIZE

CABLE ADAPTER ENTRY

2 = MECHANICAL CLAMP

3 = METRIC THREAD

4 = COMPRESSION NUT

5 = BASKET LEAVE GRIP

6 = NPT, (FEMALE), THREAD

CABLE / THREAD SIZE (SEE TABLE 1)

INSERT ASSEMBLY

PIGTAIL LENGTH XX INCHES

TABLE 1, NPT CODE:

1/2 NPT	02
3/4 NPT	03
1" NPT	04
1-1/4 NPT	05
1-1/2 NPT	06
2" NPT	08
3" NPT	10

DMIT FOR STANDARD ADAPTER THREADS, #16, 1-1/4NPT, M40

FOR METRIC THREADS, DMIT 'M', IE. M40 BECOMES 40

DESIGNATION		DATE		SCALE	
FRG	1/16 ± .005	FINISH	Y	SIZE	D
DRWN	01/16/08	DATE		SCALE	NONE
GRS				SHEET	1 OF 1

ELECTRICAL EQUIPMENT CORPORATION

HDE SERIES - ATEX, IN LINE PLUG, SHELL SIZE 16, 1-1/4" FEMALE NPT THREAD, 19-#12 AVG FEMALE CONTACTS, GROUNDED

HDE-1016-6-1912FG