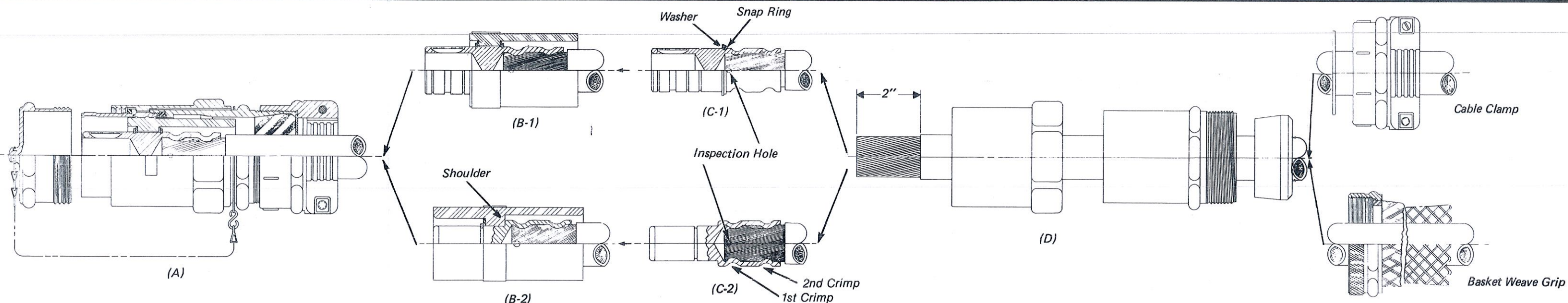
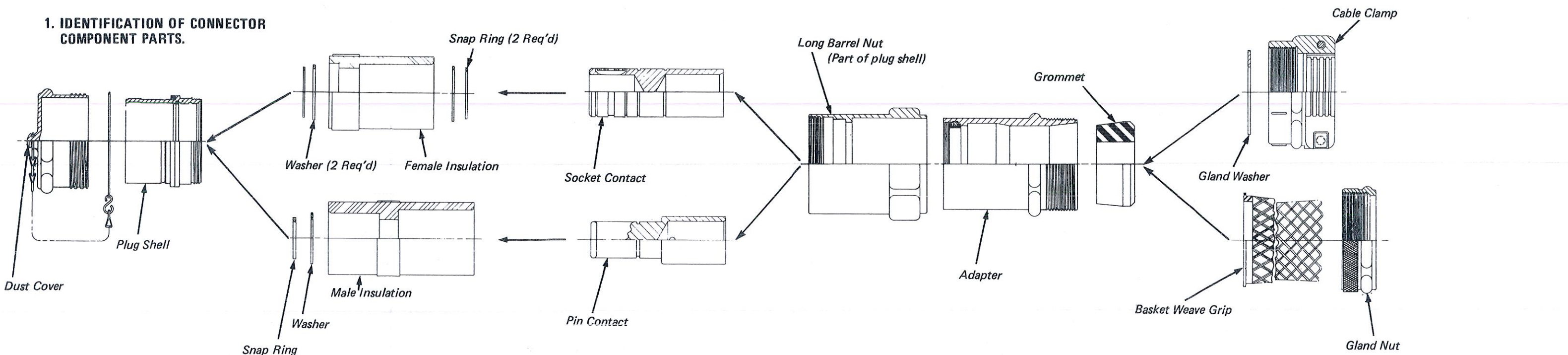


TERMINATION OF CABLE TO RIG POWER IN-LINE PLUG

1. IDENTIFICATION OF CONNECTOR COMPONENT PARTS.



2. CONTACT TO CABLE TERMINATION:

- Strip insulation to expose 2" of conductor (D).
- Slide cable clamp or gland nut; gland washer or basket weave grip; grommet and adapter onto cable as shown (D).
- Insert conductor into contact crimp barrel until conductor is visible thru the inspection hole (C-1 & C-2).
- Use Anderson VC8 crimp tool or Thomas & Betts TBM15 (15 ton tool) with die code NO 99H (535MCM cable); 106H (646MCM cable) & 115H (777MCM cable). Double crimp as shown (C-1 & C-2). Complete crimp following crimp tool instructions. (Crimp tools not supplied).

3. ASSEMBLY OF SOCKET CONTACT & INSULATION:

- Assemble snap ring in rear groove and slide on washer (C-1).
- Slide female insulation (deep recess) over socket contact until it bottoms on washer. Crimp portion of contact should be fully covered by insulation (B-1).
- Place washer over socket contact until it bottoms on insulation; then assemble snap ring in groove to retain contact in insulation (B-1).
- Tug on cable to assure that contact is properly retained.

3. (continued) ASSEMBLY OF PIN CONTACT & INSULATION:

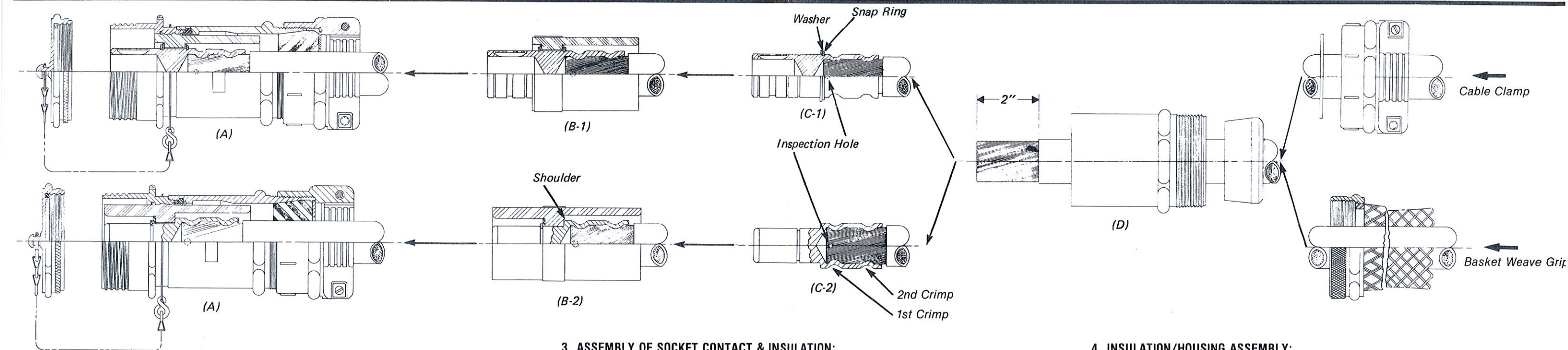
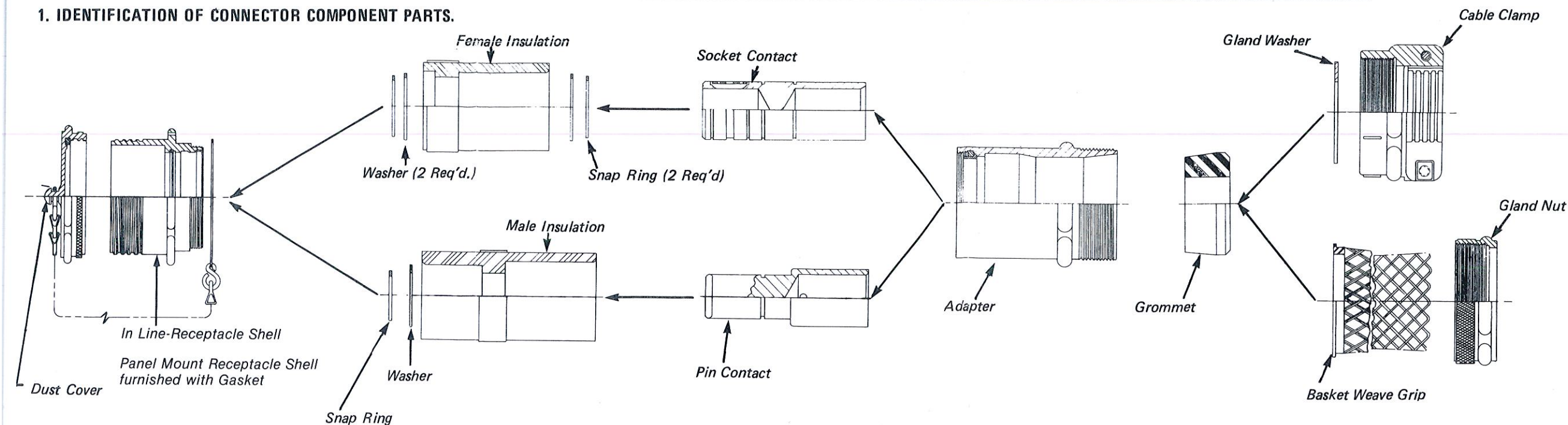
- Slide male insulation (deep recess) over pin contact until it bottoms on contact shoulder (B-2).
- Assemble washer and snap ring in groove to retain contact in insulation (B-2).
- Tug on cable to assure that contact is properly retained.
- Note: To install or remove snap ring use Waldes Part No. 0400 tool. Purchase from Waldes-Kohnoor, Long Island, NY 11101.

4. INSULATION/HOUSING ASSEMBLY:

- Insert insulation/contact assembly into shell (A). (Chain with ring preassembled to adapter as shown).
- Slide down long barrel nut (D) over plug shell, then slide down adapter and torque it securely until it bottoms against the plug shell.
- Slide down grommet, gland washer or basket weave grip and securely tighten cable clamp or gland nut to adapter.

TERMINATION OF CABLE TO RIG POWER IN-LINE OR PANEL MOUNTED RECEPTACLE WITH ADAPTER

1. IDENTIFICATION OF CONNECTOR COMPONENT PARTS.



2. CONTACT TO CABLE TERMINATION:

- Strip insulation to expose 2" of conductor (D).
- Slide cable clamp or gland nut; gland washer or basket weave grip; grommet and adapter onto cable as shown (D).
- Insert conductor into contact crimp barrel until conductor is visible thru the inspection hole (C-1 & C-2).
- Use Anderson VC8 crimp tool or Thomas & Betts TBM15 (15 ton tool) with die code NO 99H (535MCM cable); 106H (646MCM cable) & 115H (777MCM cable). Double crimp as shown (C-1 & C-2). Complete crimp following crimp tool instructions. (Crimp tools not supplied).

3. ASSEMBLY OF SOCKET CONTACT & INSULATION:

- Assemble snap ring in rear groove and slide on washer (C-1).
- Slide female insulation (deep recess) over socket contact until it bottoms on washer. Crimp portion of contact should be fully covered by insulation (B-1).
- Place washer over socket contact until it bottoms on insulation; then assemble snap ring in groove to retain contact in insulation (B-1).
- Tug on cable to assure that contact is properly retained.

3. (continued) ASSEMBLY OF PIN CONTACT & INSULATION:

- Slide male insulation (deep recess) over pin contact until it bottoms on contact shoulder (B-2).
- Assemble washer and snap ring in groove to retain contact in insulation (B-2).
- Tug on cable to assure that contact is properly retained.
- Note: To install or remove snap ring use Waldes Part No. 0400 tool. Purchase from Waldes-Kohnoor, Long Island, NY 11101.

4. INSULATION/HOUSING ASSEMBLY:

- Insert insulation/contact assembly into shell (A). (Chain with ring preassembled to receptacle shell).
- Slide down adapter (D) and torque it securely until it bottoms against the receptacle shell.
- Slide down grommet, gland washer or basket weave grip and securely tighten cable clamp or gland nut to adapter.